



THE LEARNING CONNEXION
School of Creativity and Art

**The Learning Connexion
School of Creativity and Art**

school of

creativity

and art

Prospectus 2023/2024



Prospectus 2023 – 24

The Learning Connexion School of Creativity & Art

“Ko te whaingā a TLC hei whakatū, hei akiaki,
hei te poipoi i te toitū o te auahatanga”.

TLC's goal is to establish, encourage and
nurture sustainable creativity.



DEFENDERS
FIRE SAFETY

HIGH QUALITY
FISH BAIT
POKEM
WOOD PIECES

Contents

07	Everything connects	27	Qualifications
	By Jonathan Milne		The New Zealand Certificate in Creativity NZQA Level 4 (60 Credits)
10	Why TLC?		The New Zealand Diploma in Creativity NZQA Level 5 (120 Credits)
	Our Philosophy		The New Zealand Diploma in Creativity NZQA Level 6 (120 Credits)
	Our Purpose		Diploma of Art and Creativity (Advanced) NZQA Accredited at Level 7 (120 Credits)
	We Can Help You		
	Where We Can Take You		
	Experienced Tutors and Mentors		
	Student Support		
14	Ways to Study	37	Casual Classes
	Onsite	38	Kids Classes
	Distance Delivery	40	Evening Classes and Skills Workshops
	International Students	41	How to Enrol
	Corrections Students	42	Information
17	Matariki Food Drive Exhibition	44	FAQs – Frequently Asked Questions
18	Learning Support	48	Student Stories
19	Studios	55	Staff Stories
24	Art Shop	60	Connection
26	Gallery		

TLC Facts

**Find
your place.
Create
your world.**

**Art Shop
Campus Tours
Gallery**

**On-site
and
Distance
Delivery**

14 Studios

**Diploma of Art
and Creativity
Advanced (Level 7)**

**Block Weeks
Evening Classes
Kids Classes
Mains Classes
Skills Workshops
Teen Classes**

**NZQA qualifications
in Creativity;**

- **NZ Certificate in Creativity Level 4**
- **NZ Diploma in Creativity Level 5**
- **NZ Diploma in Creativity Level 6**

**The Learning Connexion (TLC)
School of Creativity and Art**

**kai and kōrero
throughout the year**

**Bush walk
behind
campus**

**Look after
yourself.
Look after
others.
Look after the
environment.**

**17 registered
dogs onsite**

**Tūi and
Kererū
spotted in
our native
trees**

**Ceramics
Drawing
Hot Arts
Illustration
Jewellery
Painting
Photography
Printmaking
Sculpture**

Everything connects

By Jonathan Milne

Director And Founder Of The Learning Connexion



Photo by Jonathan – the tide finding its way through rocks and slowly turning them to sand.

Some years ago, on leaving Palmerston North for Auckland, I returned home after a couple of minutes, remembering to retrieve a stump of bread from the kitchen rubbish bin. Yes, I had run out of food.

These situations still exist. Some relate to Covid lock-down. Television shows homeless people out on the streets, in poverty, their lives watched by us from the comfort of our sofas, night after night.

My trip to Auckland was intended to discover food and shelter for myself. With a mix of luck and enterprise I

succeeded – rescuing bits of discarded bread became a thing of the past.

Each week I bought a large, low-cost bag of vegetables, enough to feed our household. It wasn't luxury but it taught us the value of 'deep survival'. Today I would call it 'creativity.'

The core principle is to do what you can with what is available.

My own art school experience was the seed of change. I wanted to create a different sort of school.

This idea grew very slowly and eventually emerged as 'The Learning Connexion,' the name inspired by

its abbreviation: **'TLC'**. The word 'connexion' turned out to be of equal importance as 'TLC' - offering something that was missing from the university I attended, as a student.

We live in a turbulent world and everything is connected. This is another way of thinking about creativity. It may sound too grand but, really, we are each connected with the universe – all of the problems and all of the solutions.

I've lost count of the number of people who tell me they're not creative. The fact is that we've been taught to squelch our creativity rather than to nurture it. Much of this squelching comes from being taught to do as we are told.

However, **'Deep Survival' emerges from taking opportunities. It has nothing to do with being first, rich, or famous.**

While skills are an important element, they are not the whole fabric of creativity. One way to nurture creativity ('survival') is to play/practise with puzzles that have no fixed answers.

There are endless opportunities. Social inequality and conflict are chronic and universal problems; disinformation is normal. Climate change reveals the worst events our planet has known since the meteor that extinguished dinosaurs. The arts can help us to reconnect with nature.

The importance of complex questions is that they teach us about patience and sustainability. TLC summarises the essentials of this in its 'School Agreement':

- Look after yourself
- Look after others
- Look after the environment

A parallel goal to this is in our method of teaching. We learn from shared experiences. Students teach each other and influence their tutors, who in turn share their experience with others. We regard teaching as a multi-dimensional interaction that evolves over time and becomes a very important form of research into our shared lives.

The gift of discovery leads to a big question: 'Why are we here?'

Evolution began around 3.8 billion years ago and was shaped by adaptability. We have become who we are because our qualities are relevant to life (and continuing evolution). (Timeline: The evolution of life | New Scientist)

It isn't about 'survival of the fittest', a fantasy that suits those who seek 'power'. Rather, it's about finding a way to be relevant to our universe, and this is more likely to involve service rather than dominance.

These are TLC's life-guiding principles: Discover who you are; identify how best to awaken and develop your strengths, and learn from your obstacles - they are really teachers in disguise.



Why TLC?



“

Students surprise themselves," says Level 4 tutor Karla Vink. "I had a student who was afraid of painting so he decided to go for a walk in our native bush environment with his art gear. Later in the day he came back with a completed impressionist painting of his experience of nature."

”

Our Philosophy

At The Learning Connexion, we teach sustainable creativity through making. Our style of teaching is to draw out, rather than stuff in.

By drawing from your life experiences, we enable you to develop your individual creativity and see how this relates to the wider community. We focus on learning by doing, so our programmes are hands-on and practical. Our mission is to achieve sustainable creativity for every student.



Our Purpose

For over 30 years The Learning Connexion has been a leader in the field of creative education.

Our current creativity programmes offer the flexibility for students to tailor our programmes to meet their individual interests and needs. Through hands-on making, students connect with what inspires them while learning a diverse range of technical and creativity skills. Our NZQA approved creativity programmes support the development of transferable skills such as; innovation, risk-taking, leadership, engagement with community and businesses, with the aim of developing a sustainable creative practice. Each person's own history and interests form the basis for their creative journey with The Learning Connexion.

We Can Help You

1. Establish and nurture **sustainable creativity**
2. Develop **confidence** and **improve wellbeing**
3. Work with passion, integrity and a **sense of fun**
4. Develop **innovation** in your art, learning and business
5. Learn how to balance your own personal, business and social goals with **respect for the environment**
6. Become actively involved in the **creative community**
7. Unlock **creative thinking**

Where We Can Take You

The Learning Connexion gives you the skills and confidence to become who you want to be.

Our graduates say that our programmes boost their creativity, build resilience and give them the confidence to pursue their goals. Our graduates have had success as exhibiting artists, art educators, zine makers, photographers, illustrators, gallery owners, tattoo artists, children's book publishers, muralists, jewellers, creative facilitators and event coordinators. The Learning Connexion has a proven track record of helping our students realise their creative potential.

“

"I've been to many different schools and tried uni, TLC is the only place I've ever been excited to spend my whole day at. I've always wanted to be a tattoo artist, that's why I came to TLC to help me refine my skill set and learn new things that will help me on the way." – Lizzie, New Zealand Certificate in Creativity Level 4.

”

Experienced Tutors and Mentors

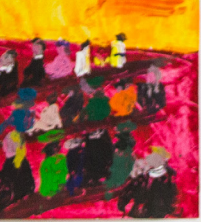
Our teaching staff are all practising artists, specialising in a wide range of disciplines. They bring real world expertise to their roles. **Passionate about art and creativity, they are enthusiastic about sharing skills and facilitating each student's individual creative journey.**

Tutors facilitate classes at our campus and assist students in developing their creative processes and technical skills. The group dynamic within the classes is a powerful tool, where both students and tutors contribute equally to creative growth.

Mentors work closely with students to support their individual needs. All students are assigned a mentor who works with them throughout their programme, guiding the development of their creative practice and providing feedback.

Student Support

We offer a dedicated onsite learning support staff member to support students' learning needs, including help with study skills and learning strategies. We also have experienced programme support staff who are responsive to the daily challenges faced by our diverse group of students.



Ways to Study



The Learning Connexion's goal is to provide a pathway of learning which best suits the individual needs of each student within an inclusive learning environment.

We offer options for studying onsite or from home. Learning occurs through practical application of creative processes supported by a combination of tutor/mentor directed and independent study. All of our programmes can be completed full-time or part-time. Casual students can attend any of our classes, please see page 37 for more information.

These flexible study options give our students the opportunity to develop artistic and creative skills while meeting existing personal commitments such as work and family.

Onsite

Located in Taita, Lower Hutt, The Learning Connexion campus is set within four hectares of New Zealand native bush. We have expansive views that look out over the Hutt Valley. Our campus is an action-packed art space, where students and tutors come to explore their creative ideas in a supportive environment. Studying onsite provides a vibrant, supportive community that enhances creativity with students having access to a wide range of specialist studios.

Regular contact with staff and other students provides valuable feedback about ideas and processes.



Distance Delivery

The Learning Connexion offers a flexible and supportive study from home option for students anywhere in New Zealand. Distance delivery means you can learn to draw, paint, sculpt, design and create from the comfort of your own home, receiving one to one support and guidance from our skilled mentors, all of whom are practising artists.

Studying from home gives you the flexibility to maintain your current lifestyle without the pressure of travel and the conformity of traditional class structures. Communication with your mentor can be through Skype, Zoom, phone, email, social media or written feedback. We also offer you the opportunity to connect with other students so that, potentially, by the end of your programme, you will have a community of other creatives to continue working with.

You can create a sustainable creative life from anywhere around the world!

Students are each assigned a personal mentor who will help them develop their individual creative practice and guide them through their chosen programme providing feedback and suggestions along the way. Each student will also have access to TLC's comprehensive video and programme resources online.

In addition to this, distance delivery students can attend onsite classes at The Learning Connexion campus – subject to conditions.

Students studying by distance delivery will need the following:

- Access to a reliable internet connection
- A dedicated work space
- A device to access our resources and watch our videos online
- Smartphone/cell phone or tablet with a camera



International Students

We welcome students from all over the world!

If you are overseas and want to come and study in New Zealand, you are very welcome to do so. In order to meet your student visa requirements, you need to be enrolled as a full-time onsite student, and move to Wellington – ‘The coolest little capital in the world’ – for the duration of your programme.

International students also have the option of studying part-time from their home country, or anywhere in the world, through distance delivery. For more information on how to enrol as an international student onsite, or via distance delivery from your home country, please visit our website: tlc.ac.nz/international-students

Corrections Students

The Learning Connexion welcomes study enquiries from within Corrections facilities around New Zealand.

Achieving an NZQA qualification in creativity gives Corrections students valuable skills for the future including creative techniques, problem-solving, commitment, focus and confidence.

The Learning Connexion will provide:

- Resources adapted to meet Corrections’ guidelines
- Global 0800 number from all facilities to stay in touch
- Approved art materials
- Individual mentor to guide students through the programme
- Participation in student and national exhibitions

For more information, please phone **0800 364 636**, or email us on correctionsenquiries@tlc.ac.nz

Matariki Food Drive Exhibition



An exhibition at The Learning Connexion Gallery which celebrated Matariki.

As the marking of the Lunar New Year, Matariki is a time to consider the renewal and change that is a constant in life; to celebrate the year past and make plans for the year to come.

Traditionally, Matariki is closely tied to planting, harvesting and hunting. Those core concerns around providing for ourselves and our loved ones remain. In recent years, for more and more of us, these concerns around reliably providing life's basic necessities have become pressing, even urgent issues.

The artwork included in this exhibition were from an overflow of works originally made for two

projects undertaken by students in TLC's Restricted Programmes – those students studying our qualifications from prisons around Aotearoa. One set were 'kites' celebrating Matariki. The second set of works were 'plates' created over the past few years in support of the Rimutaka Prison's Gate to Plate event.

The exhibited works fit with concepts central within mātauranga Māori (and many other indigenous and traditional knowledge systems and world views) such as balance and reciprocity. Representing an abundance (more work than we had space for) in their own context, the works are utilised here with the intent that they draw awareness to and help alleviate an essential and growing material need in another.

Learning Support



Lydia Grove - Learning Support at The Learning Connexion

Are you looking for motivation, energy, well-being, and successful study strategies? If so, Lydia can help you to thrive here while you study with The Learning Connexion.

Lydia works alongside all students to reduce barriers, increase learning and study strategies and work towards building positive wellbeing habits. Lydia is here to help you with managing your study and building life-long life skills to help you become sustainable creatives.

Contact her if you are getting behind on your programme, need to locate community support groups, or want to know how to manage your study with personal health and mental wellbeing issues.



What we do

Despite your love of art and the best intentions, sometimes 'life' can crop up and throw a spanner in the works. Learning Support is here to help work with you through these times and to ensure you get the best TLC can offer.

It's best to have a plan of action and support before life gets too much and deadlines creep up on you by surprise. With support you can accomplish your goals and dreams. We can help with:

- Study skills, such as managing your time, organising workloads, planning ahead
- Keeping focus, getting through 'blocks' and finding inspiration
- Building literacy, numeracy and language skills to support you through the course requirements
- Working on CVs, job applications, interview techniques and planning

Studios

Ceramics Studio

In our Ceramics Studio students can create sculpture forms from our large selection of clay. We have earthenware, stoneware, porcelain, paper clays and a variety of raku clays available.



Painting and Drawing Studios

Our Painting and Drawing studios are light and airy and provide a great atmosphere in which to get creative. They are a great place in which to practice your drawing techniques, paint, sketch, or simply sit, meditate and visualise your next grand design.





Jewellery Studio

Gain professional knowledge in working with precious and semi-precious metals and stones. Design development, as well as working towards marketing your work, is an important part of any jewellery class.



Hot Arts Studio

Explore your creativity and craftsmanship through the transformative qualities of fire. Our main Hot Arts area contains a foundry for melting and casting bronze and other metals, as well as a welding and fabrication room for creating and assembling metal sculptures.

Printmaking Studio

Our Printmaking Studio gives students the room and unlimited potential to create and reproduce their own unique images, forms and markings.



Mixed Media Studio

The Mixed Media Studio is one of our largest studio spaces in which to create large sculptural artworks. In this workroom learn how to use hand and power tools, and experience the freedom to invent crafting processes of your own.





Illustration Studio

Here, you can design and create your own storybook characters within imaginary worlds, produce cartoons, posters and graphic novels, and learn how to present quality finished illustrations to real-world, industry driven deadlines.



Photography Studio and Darkroom

Students can explore portraiture, staged photography, documentary, street and night photography, alongside traditional and unique processes such as photograms, cyanotypes or making your own pinhole camera.



Art Shop



Our campus Art Shop is open to both students and the general public.

We have a huge range of specialist artists' materials at very competitive prices, and our friendly staff can help with all your queries.

You can even shop online 24/7 from home and have your purchases delivered straight to you.

Opening Hours and Contact

Monday – Friday

9.00 am – 2.00 pm

Phone: 0800 852 628

Email: materials@tlc.ac.nz

Website: shop.tlc.ac.nz

“

As an Art Supplies Junkie I totally must agree that the TLC art shop has loads of art supplies at competitive prices. Plus, the service and adventure is unique! – Perla

”



Gallery



TLC Gallery is a contemporary art space located within The Learning Connexion. It seeks to build bridges and create dialogue between The Learning Connexion students, emerging and established artists, and curators from Te Awakairangi | Lower Hutt, Te Whanganui-a-Tara | Wellington, and throughout the motu.

TLC Gallery performs a central and generative role within The Learning Connexion community. The central mission is to platform artists through exhibitions, and provide opportunities for students to experiment and share more informally.

The TLC Gallery is helping to give students their first taste of exhibiting their work in a professional gallery environment. In August 2022 we hosted

an exhibition of work by Emma Hercus and Erika Kruger – LIKE A BIRD. That same month, Emma won the prestigious \$20,000 National Contemporary Art Award for an assemblage work titled Red Handed - an outstanding achievement.

The gallery is open Monday to Friday from 9 am to 2pm. It is free to visit. While walking through the space you're welcome to take photos for personal use and share them online.

“

I have had my first exhibition of work. The support and encouragement from the staff at TLC to participate in these things are outstanding – Erika

”

Qualifications



The Learning Connexion offers tertiary level, NZQA approved, national qualifications in creativity. Our programmes are student-centred, hands-on, and emphasise the connections between the processes of art and the wider field of creativity. The overall goal is to achieve sustainable creativity for every student.

Throughout all of our programmes, students work closely with tutors and mentors to connect with the ideas, processes and materials they choose to explore. Tutors and mentors provide assistance to meet technical needs and to develop an appropriate set of skills for each student, as well as give personalised feedback to help support each student's creative exploration.

For further information about programme requirements visit our website tlc.ac.nz/qualifications.

The New Zealand Certificate in Creativity***NZQA Level 4 – 60 credits***

20 weeks full-time (35 hours per week)

40 weeks part-time (17.5 hours per week)

**The New Zealand Diploma in Creativity*****NZQA Level 5 – 120 credits***

45 weeks full-time (34 hours per week)

90 weeks part-time (17 hours per week)

**The New Zealand Diploma in Creativity*****NZQA Level 6 – 120 credits***

45 weeks full-time (34 hours per week)

90 weeks part-time (17 hours per week)

**Diploma of Art and Creativity (Advanced)*****NZQA Accredited at Level 7 – 120 credits***

45 weeks full-time (30 hours per week)

90 weeks part-time (15 hours per week)



Top Left:
Level 4 Class

Bottom Left:
Sammy Valcheva

Top Right:
Lizzie Knight

Bottom Right:
Tui McInnes

The New Zealand Certificate in Creativity – Level 4



The New Zealand
Certificate in Creativity
(NZQA LEVEL 4) 60 Credits

Full-time | 20 weeks (35 hours per week)

Part-time | 40 weeks (17.5 hours per week)

This qualification is a hands-on, practical programme for those with little or no practical experience, and/or those who wish to widen their creative practice and build key skills.

The programme introduces a wide range of art and creativity ideas and applications.

You'll gain foundation skills in creativity, including the ability to explore ideas in a range of styles and media. In essence, Level 4 is about exploring your creative interests.

Visit tlc.ac.nz/enrolment for information about fees and enrolment details.

Entry Requirements

Commitment and the ability to maintain active engagement throughout the programme are key requirements for this qualification. Students entering into the Certificate programme do not need to have previous art experience or prior qualifications.

Although no previous art experience or prior qualifications are required, the qualification does provide a pathway from the:

- New Zealand Certificate in Arts and Design (Level 3)
- New Zealand Certificate in Digital Media and Design (Level 3)
- New Zealand Certificate in Ngā Toi (Level 3)

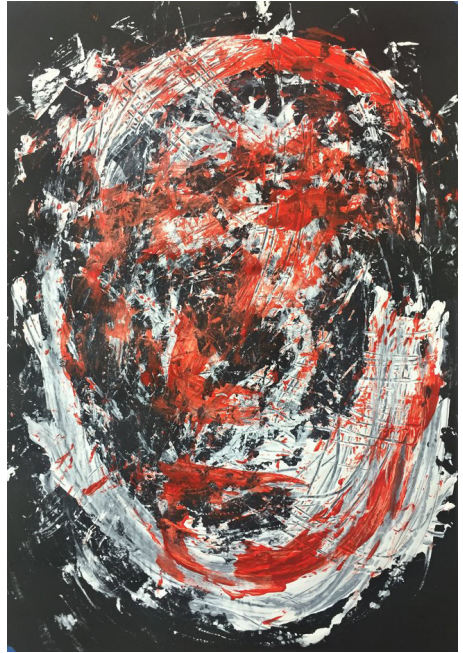
Graduate Profile

Graduates will be able to apply creative thinking and processes, with guidance, across a range of disciplines.

Employment Pathways

Graduates of this qualification will have the creative skills and knowledge to fill assistant and/or support roles within industries and communities.

The qualification provides a pathway to higher level diploma or degree-level study, for example, the **New Zealand Diploma in Creativity (Level 5)**.



Top Left:
Paige Falconer

Top Right:
Sol Brown

Bottom Left:
Jacquie Fee

Bottom Right:
Peter Coolbear

The New Zealand Diploma in Creativity – Level 5



The New Zealand
Diploma in Creativity
(NZQA LEVEL 5) 120 Credits

Full-time | 45 weeks (34 hours per week)

Part-time | 90 weeks (17 hours per week)

The goal of the Diploma in Creativity (Level 5) programme is to acquire a range of skills in creativity, including the ability to expand original ideas in a range of styles and media, to provide an understanding of creative process and practice.

You will focus on your areas of interest and, by working with your core drivers, expand your transferable skills, as well as your creativity. In essence, Level 5 is about developing and challenging your creative practice.

Visit tlc.ac.nz/enrolment for information about fees and enrolment details.

Entry Requirements

Commitment and the ability to maintain active engagement throughout the programme are key requirements for this qualification.

The qualification provides a pathway from the:

- New Zealand Certificate in Creativity (Level 4)
- New Zealand Certificate in Arts and Design (Level 4)

- New Zealand Certificate in Fashion (Level 4)
- New Zealand Certificate in Digital Media and Design (Level 4)

OR; prospective students may apply for recognition of prior learning. See page 42 for more information.

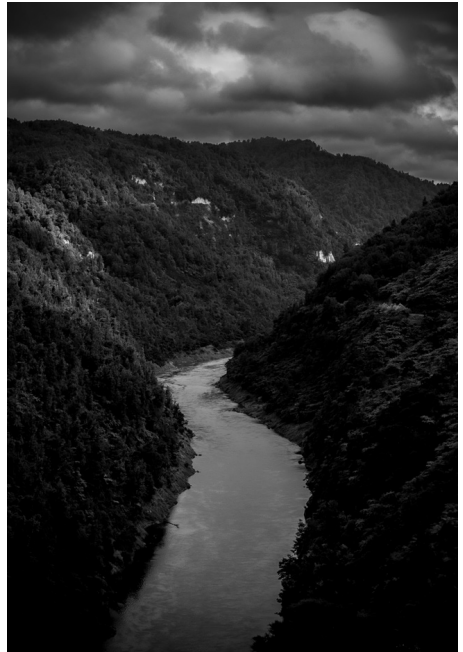
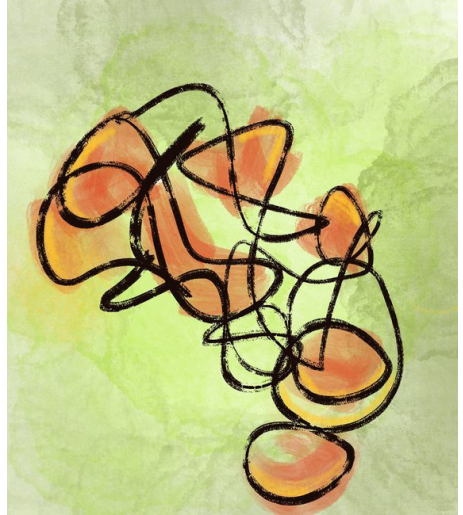
Graduate Profile

Graduates will be able to apply creative thinking, critical evaluation and technical processes with some guidance, across a broad range of disciplines.

Employment Pathways

Graduates of this qualification will have transferable skills and knowledge to complement employment in creative practice or entry level industry roles.

The qualification provides a pathway to higher diploma or degree-level study, for example, the **New Zealand Diploma in Creativity (Level 6)**.



Top Left:
Christine Winbush

Top Right:
Nadia Simpson

Bottom Left:
Serra Clark

Bottom Right:
James Price

The New Zealand Diploma in Creativity – Level 6



The New Zealand
Diploma in Creativity
(NZQA LEVEL 6) 120 Credits

Full-time | 45 weeks (34 hours per week)

Part-time | 90 weeks (17 hours per week)

The Diploma in Creativity (Level 6) programme encourages you to be self-driven and is all about consolidating your creative practice.

The aim of the Level 6 programme is to increase your understanding of the creative process and develop a sustainable practice.

You will continue to work from your core drivers and areas of interest, to develop transferable skills in creativity. These may be applied effectively to a wide range of roles and/or higher tertiary study.

You will focus on how your creative practice connects with the community, presenting work and exploring entrepreneurial opportunities.

Visit tlc.ac.nz/enrolment for information about fees and enrolment details.

Entry Requirements

Commitment and the ability to maintain active engagement throughout the programme are key requirements of this qualification.

The qualification provides a pathway from the:

- New Zealand Diploma in Creativity (Level 5)
- New Zealand Diploma in Arts and Design (Level 5)
- New Zealand Diploma in Fashion (Level 5)
- New Zealand Diploma in Digital Media and Design (Level 5)
- New Zealand Diploma in Nga Toi (Level 5)

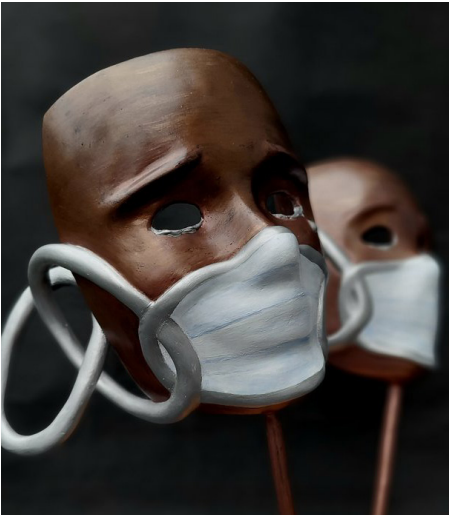
OR; prospective students may apply for recognition of prior learning. See page 42 for more information.

Graduate Profile

Graduates will be able to independently produce innovative solutions in a range of contexts.

Employment Pathways

Graduates of this qualification will have the skills to undertake commission work, become self-employed, or contribute to creative industries and/or other organisations that require creative processes.



Top Left:
Perla Gaffney

Top Right:
Tina Smith

Bottom Left:
Shaun Robinson

Bottom Right:
Erika Kruger

Diploma of Art and Creativity (Advanced)

(Advanced) – Level 7



NZQA Accredited at
(LEVEL 7) 120 Credits

Full-time | 45 weeks (30 hours per week)

Part-time | 90 weeks (15 hours per week)

The Diploma of Art and Creativity (Advanced) is a natural progression from the level 6 programme, building on each student's existing skill base and working towards the development of professional practice.

Through this work students will articulate the purpose of their creativity and are expected to produce a body of experimental work for shared discussion. They will create major work for public showing at the conclusion of the programme.

Visit tlc.ac.nz/enrolment for information about fees and enrolment details.

Entry Requirements

Applicants will be required to participate in an interview, the results of which become part of the application process. Please contact our Admissions team for more information. The qualification provides a pathway from the:

- New Zealand Diploma in Creativity (Level 6)
- New Zealand Diploma in Arts and Design (Level 6)

- New Zealand Diploma in Fashion (Level 6)
- New Zealand Diploma in Digital Media and Design (Level 6)
- New Zealand Diploma in Nga Toi (Level 6)

OR; prospective students may apply for recognition of prior learning. See page 42 for more information.

Graduate Profile

On completion of the programme, students have art skills reflecting sensitivity to materials and processes, skills and knowledge that contribute to the development of personal artistic practice, solo and group exhibition curating, review, analysis, interpretation and critical debate on art related issues.

Employment Pathways

Graduates of this qualification will have the skills to undertake commission work, become self-employed, or contribute to creative industries and/or other organisations that require creative processes.

Casual Classes



All classes at The Learning Connexion are also available to people coming to the campus as casual students - those not enrolled in our NZQA programmes.

Casual students are able to register for the classes on a term-by-term basis, subject to availability.

Mains

These are full-day classes (9.30am-4.30pm) on a weekday, for seven weeks per term. Some of the classes require a certain level of experience (see notes below each class listing on our website).

Block Week Classes

The first week of each term is known as 'Block Week One'. This is one week of the same class – so you get a good chance to really hone your skills in a particular area.

The last week of each term is known as 'Block Week Two'. We advertise the classes in Block Week Two at the beginning of that term.

Kids Classes



After School Classes

These classes offer kids a range of interesting, challenging and fun projects to complete. Students will experiment with a variety of different mediums and techniques in a creative environment.

Our classes aim to build self-confidence and help students find their own creative voice, as well as develop skills in creative thinking, experimentation and spontaneity.

Each week kids will learn new skills, gain confidence and have loads of fun with our talented and dedicated tutors.

Holiday Programme for Kids and Teens

Whether you are working or just need a break, The Learning Connexion's Kids Holiday Programme is timed just right to keep your kids happy and engaged while learning creative skills!

Our holiday programme is taught by experienced and creative tutors. Held at our Taita campus, we provide children with an unforgettable, authentic art school experience that nurtures creativity and wellbeing. WINZ subsidises some classes, see our website for more details.



Evening Classes and Skills Workshops



Evening Classes

These are run from 6pm-9pm each term. These classes offer a great chance to develop your skills in areas like drawing, painting, ceramics and jewellery making, and are suitable for beginners as well as more experienced artists.

“

It's been one of the best things I've done for myself. I get to be me, do things I want to do, learn things I want to learn, and be around creative people. I have enjoyed it so much my daughter is now doing her Level 4 Certificate.

”

Skills Workshops

A highlight of The Learning Connexion calendar! Through a series of specialised boutique classes, run by experts in their fields, you will learn some wonderful old-school techniques with a contemporary twist.

These workshops feature artists visiting from all around Aotearoa, and are hugely popular. Keep an eye on our website for updates.

How to Enrol



1. If you have any questions

- Call admissions on 0800 278 769
- Visit tlc.ac.nz
- Email admissions@tlc.ac.nz

2. ID Verification

Your proof of ID must be verified by a justice of the peace, court registrar, notary public, or here at TLC. The person verifying your ID must:

- Have seen the original document
- Have checked that the photocopy is a genuine unaltered copy of the original
- Write on the copy that it is a true and accurate copy of the original
- Print their name, title, signature and date on the copy

3. Complete online enrolment form

Complete the enrolment form on our website

- Go to www.tlc.ac.nz
- Remember to include emergency contact details
- Upload a photo of your verified ID
- Call our admissions team if you have any questions

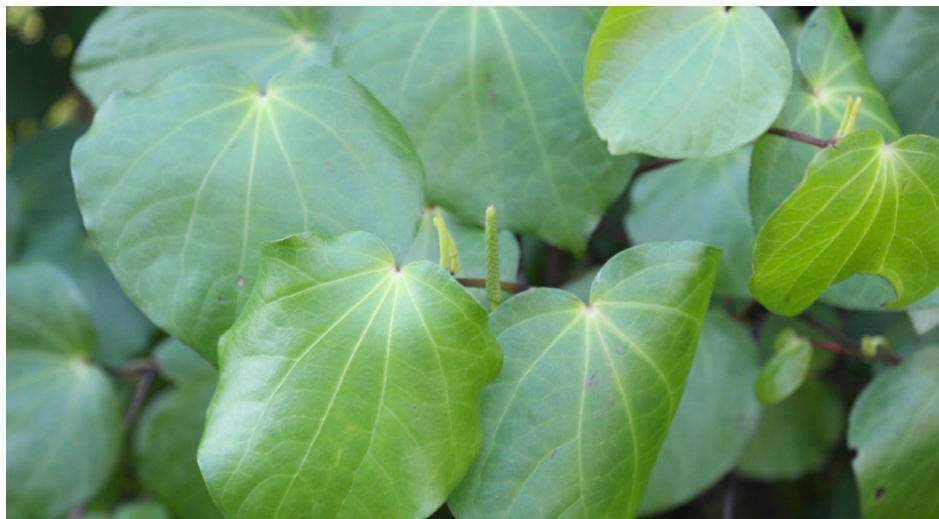
4. Financial Assistance

Check your eligibility for Fees Free. Apply now to StudyLink for loans, allowances and course related costs.

- Go to feesfree.govt.nz and studylink.govt.nz. Processing takes time so it's best not to leave this until the last minute.

5. Get ready to be Creative!

Information



Entry Requirements and Recognition of Prior Learning

The Learning Connexion's New Zealand Certificate in Creativity (Level 4) programme is 'open entry' and no previous experience is needed to enrol in this programme.

Students wanting to enrol into the New Zealand Diploma in Creativity programmes at levels 5 and 6 are required to either complete the Certificate Programme at level 4, or submit a portfolio for assessment as part of the recognition of prior learning (RPL) process.

Students applying for enrolment in any programme must demonstrate an ability to successfully complete the programme of study they are applying to enrol in.

In addition to submitting a portfolio, applicants for the Diploma of Art and Creativity (Advanced) – Level 7 are required to participate in an interview, the results of which become part of the application process.

Please contact our admissions team on **0800 ART POWER (278 769)**, or check out our website tlc.ac.nz/enrolment for more information on portfolio requirements.

The Fine Print

Persons under 18 years of age are legally classified as minors. When minors apply for enrolment, the enrolment contract must be co-signed by a parent or guardian. In addition, proof of guardianship is required. Persons under 16 years of age must meet Ministry of Education criteria. Contact us for more information on how to enrol a minor.

Fees

For our current fees and more information visit our website at tlc.ac.nz or give us a call on **0800 278 769**.

Student Fee Protection and Student Fee Indemnification

In accordance with section 236A of the Education Act 1989 and subsequent amendments, The Learning Connexion has an approved Trust Account for Student Fee Protection and Student Fee Indemnification. The Trust Account is administered by Peter Nankivell of Count On Us Ltd.

Note: Fees are subject to change without notice.

Payment Options

Students can pay tuition fees via StudyLink, cash, online banking or credit card. Full payment must be arranged or made no later than the first day of the student's programme.

Alternative payment may happen through a flexible scheduled payment plan if discussed with Accounts first. There is no interest in this option, however a \$50 administration fee applies.

Student Loans and Allowances

Both part-time and full-time students at The Learning Connexion may be eligible for a student loan. Students need to be studying full-time to receive a student allowance. Contact StudyLink to see if you qualify, or for more information phone **0800 889 900**, or visit www.studylink.govt.nz.

Additional Costs

Students will need to budget for purchasing any materials used for their work. This cost will be dependent on the type and scale of work they choose to do.

FAQs – Frequently Asked Questions



What's different about The Learning Connexion programmes?

Our programmes are student centered and flexible, allowing students to develop creativity skills in a way that has real meaning to them. We provide a safe and positive environment in which your creativity can prosper. If you work hard and commit yourself fully to your programme, you will succeed.

Do I have to be academically minded?

Our qualifications are all 'hands-on' programmes. There are no written exams. Research and critical analysis are part of the Diploma of Art and Creativity (Advanced) programme. The programmes can be explored in a variety of ways to suit your individual learning style.

Can I do any of TLC’s programmes without previous art experience?

Yes. Our Certificate programme is aimed at helping students achieve a viable level of creativity. It is also an opportunity to try out a range of creative disciplines. The more you use your skills, the better they will become!

See page 29 and 30 for more information.

What sort of career can I expect after completing my programme?

The creativity skills you develop at The Learning Connexion can be transferred to many fields. We encourage students to explore options that link with their core motivation. The classes are here to help you to discover what works best for you. It takes time and patience. If your ideal job doesn’t exist, create it!

Potential careers include: entrepreneur, advertising, project management and administration, professional artist, costume designer, craftsperson, teacher, film or television producer, florist, graphic designer, hairdresser, illustrator, scenic painter, interior and landscape designer, muralist, jeweller, mason, blacksmith, photographer, screen printer, sign writer, tattoo artist, work in theatre/film production and design.

Do you recognise previous training or experience?

Yes. If you have previous experience or qualifications, you can apply for direct entry to either the level 5 or 6 Diploma in Creativity, or the Advanced Diploma in Art and Creativity at level 7. You will need to submit a portfolio and a statement of creative intent for assessment. Entry to any programme level will be at the discretion of the Academic Board.

See page 42 and 43 for more information.

Can I put my programme on hold and take a term off?

You cannot put your programme on hold once you have enrolled. In some cases we may be able to grant an extension, but only where there are extenuating circumstances. Talk to programme support and see what creative solutions they come up with.

Do I need to purchase anything?

Maybe. This is dependent upon your personal creative needs and goals. You can improvise at low cost (use recycled materials; rethink what you can do with natural fibres and other media; swap materials and tools with other people). Every student enrolled at TLC is able to purchase art supplies from our materials shop. For more information please visit tlc.ac.nz.

Can I study part-time and work to support myself?

Yes, you can study any of our four qualifications part-time or full-time (subject to entry requirements). This gives you the opportunity to develop artistic and creative skills while meeting existing personal commitments (e.g. work and family).

Can I get a Student Loan and/or Student Allowance?

TLC's programmes are accredited and approved by NZQA so students are eligible for a Student Loan and/or a Student Allowance provided that they meet StudyLink criteria.

Contact StudyLink on **0800 889 900**, or find more information at www.studylink.govt.nz.

How can I be part of The Learning Connexion community?

TLC encourages all students to make direct contact with other students. Students can keep up-to-date with what's going on at TLC through our social media sites Facebook and Instagram, or in person at our regularly held student exhibitions. Our student rep group provides a gateway into collaborative opportunities and external community events. Stay connected by subscribing to our free newsletter via our website at tlc.ac.nz.

Who do I contact if I need help with my study?

For any study related issues please contact programme support on ps@tlc.ac.nz, or by calling **0800 ART POWER (0800 278 769)**.

Distance students should contact their mentor before contacting programme support.

Can I withdraw from my programme?

Yes. Domestic students may withdraw, with a full refund of tuition fees, from the programme they have enrolled in within 8 days of the starting date of their programme or, in some cases, up to 21 days with a full refund minus 20% admin cost. For all withdrawals and or more information please talk to programme support.

International Students may withdraw from the programme they have enrolled in, with a full refund of tuition fees, within the first ten working days of the starting date of their programme.

Keri-Mei Zagrobelna

Jewellery Tutor

On-Site



Keri-Mei Zagrobelna started work as a mentor at TLC right at the beginning of the first Covid lockdown. She is now delighted to be working with students face-to-face again in her role as a Jewellery tutor at TLC.



“ Keri-Mei says she is hoping to help students find their own unique voice through art, just as she did. ”



Her whakapapa is to Te Ati-Awa and Whanau-a-Apanui and she is also of Polish and Pākeha descent. Much of her work is underpinned with Māori philosophy and cultural narrative. “If people make a cultural connection to Māori Tikanga through my work, then I’ve achieved in building a connection. If they just enjoy the work for the craftship and aesthetics, then that is great, too.”

Keri-Mei says she is hoping to help students find their own unique voice through art, just as she did.

Dan Wilkinson

Drawing Tutor and Mentor
On-Site



From making to sharing

TLC tutor Dan Wilkinson enjoys watching students progress and develop at their own pace. "I like to create an environment where students can express who they are, as well as what they see and feel."

"By creating a supportive environment in the studio, students can quickly progress from making to sharing. Students surprise themselves with how quickly they can feel comfortable sharing in our gallery space."

One of Dan's students – Sol, says it's an approach that produces "magic".

"As a beginner to life drawing, I really valued the group critical feedback sessions worked into the class plan. Discussing others' works inspired me to take on new materials and approaches, and to challenge my own art practice. I walked in not knowing if I was in the right classroom, to now having the confidence to exhibit my work in TLC's gallery space."

Leo Semau

Mentor
On-Site



Leo Semau left a government-based job to become a student at TLC. He is now a mentor, passing on his knowledge and skills to others. Leo says the most important advice he can give to students is work ethic.

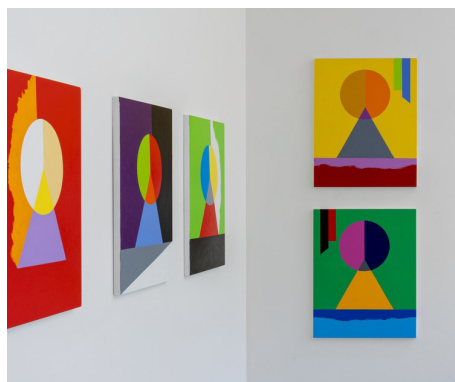
“I’ve seen so many very talented students be overtaken by less naturally talented classmates simply because the less naturally talented person had the stronger work ethic – they turned up consistently, persevered through difficulties, and kept chipping away at their creative goals.

The very cool thing about our programmes is that they work from the student’s interests. So whether someone is just out of school and finding what they want to do in the world, wanting to change careers or direction in life, or wants to move forward in a creative journey they’ve already started, they’ll be able to identify their goals and work toward achieving them in a supportive and inclusive environment.”

Sophie Saunders

Mentor

Distance Delivery



In addition to being a TLC mentor, Sophie Saunders is an accomplished painter who exhibits regularly. She is also a recipient of the Rita Angus Residency as well as a finalist in numerous art awards.

Sophie says distance delivery works best for people who have a strong urge to get serious about making their own work. “They need to be prepared to knuckle down and work quietly at home, knowing they always have someone they can touch base with. It’s often about the student-mentor dialogue and having someone to bounce ideas off.”

She says the most rewarding part of being a mentor is seeing students start to unfold their own creative process. “It’s a privilege to see people walking on their own path and observe how their unique style develops. Hopefully I can provide background support in that process, be a sort of touchstone.”



© 2021 Heinz
Ketchup
NET WT 12.5 OZ (354g)
DISTRIBUTED BY
HEINZ FOODS OF AMERICA
CINCINNATI, OH 45202
www.heinz.com

Mustard

Stacks of plates and bowls

Mug

Condiments

Stacks of bread

Bowl of salad

Stacks of bread

Plate of food

Plate of food

Plate

Sunglasses

Face mask

Cap

Stove

Pan

Utensils

Ingredients

Preparation

Serving

Storage

Ingredients

Preparation

Serving

Storage

Ingredients

Preparation

Serving

Storage

Man in black jacket

Woman in red jacket

Woman in blue jacket

Woman in red jacket

Woman in white jacket

Woman in red hat

Person in white jacket

Car

Car

Trees

Structure

Connection



If it's not obvious from our name, we deeply value connection at TLC. Connection comes in many forms. The sense of belonging and family students feel at TLC – something you will develop through shared experience and working together.

The connections between tutors, mentors and students – it's one of mutual respect and support. The deep connection you should feel with your creative work – you are sharing something personal and unique to you – we understand that. And the connections you will develop with the wider artistic community – we want you to eventually flourish in Aotearoa's creative and wider communities.

Art is something special, it's meant to be shared.

“

TLC is also a very loving caring community with a focus on nurturing the creativity within each of us. From my experience it has been a very open and supportive art school. – Chissy

”

The concept of whanaungatanga best captures what we mean when we talk about connection at TLC. We strive to foster connections during your time here, and students consistently mention that it's what they love the most about their experience.

Produced by The Learning Connexion marketing and design team. Sarah Macdonald, Jeff Bell and Paige Collinson

Wrap-around Cover

Image of exterior of a TLC building painted by artist Sue Lund.

Photo by Sarah Macdonald

Photography

By The Learning Connexion staff, students and alumni

Design

By Paige Collinson

Editing

Dennis Berdinner and Susan Knaap

The Learning Connexion School of Creativity & Art 182 Eastern Hutt Road Taita, Lower Hutt 5019 PO Box 9811, Wellington 6141 0800 ART POWER (0800 278 769)

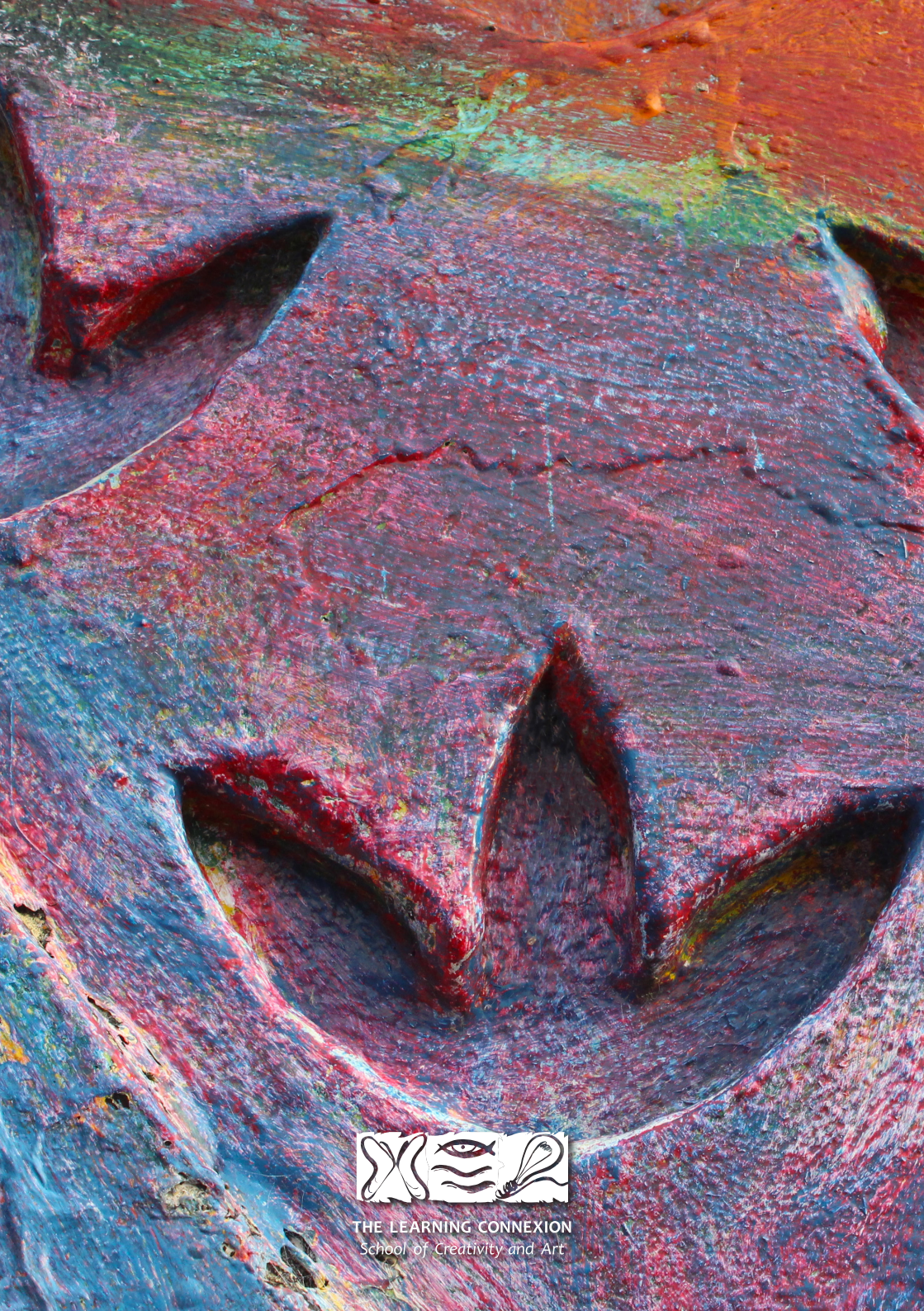
info@tlc.ac.nz

www.tlc.ac.nz

©2022-2024 Copyright The Learning Connexion Ltd. No material in this publication may be used in any form without the written permission of the copyright holder.

LAST UPDATED OCTOBER 2022

Please note: The information contained in this prospectus is indicative of the programmes, classes and resources which will be available in 2023. While all reasonable efforts are made to ensure our listed programmes and their content are up to date, The Learning Connexion reserves the right to change the content, method of delivery, withdraw any qualification or part thereof, or impose other conditions on enrolments. For the most up to date information we recommend visiting our website at **www.tlc.ac.nz**



THE LEARNING CONNEXION
School of Creativity and Art